

**\*TM 5-4120-374-23P**

---

**TECHNICAL MANUAL**

**ORGANIZATIONAL, AND DIRECT SUPPORT  
MAINTENANCE REPAIR PARTS  
AND SPECIAL TOOLS LIST**

**AIR CONDITIONER, HORIZONTAL  
9,000 BTU/HR  
MODEL FM 9000  
NSN 4120-01-125-3947**

Approved for public release; distribution is unlimited

This manual supersedes TM 5-4120-374-23P, 18 April 1984, including all changes.

---

**HEADQUARTERS, DEPARTMENT OF THE ARMY**

**16 SEPTEMBER 1990**



CHANGE

NO. 1

HEADQUARTERS  
DEPARTMENT OF THE ARMY  
WASHINGTON, D. C., 9 NOVEMBER 1992

Organizational, and Direct Support Maintenance  
Repair Parts and Special Tools List

**AIR CONDITIONER, HORIZONTAL  
9,000 BTU/HR  
MODEL FM 9000  
NSN 4120-01-125-3947**

Approved for public release; Distribution is unlimited

TM 5-4120-374-23P, 16 September 1990 is changed as follows:

1. Remove and insert pages as indicated below. New or changed text material is indicated by a vertical bar in the margin. An illustration change is indicated by a miniature pointing hand.

Remove pages

7-1 and 7-2  
Bulk-1/(Bulk-2 blank)  
I-1 and I-2  
I-5 and I-6

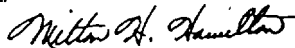
Insert pages

7-1 and 7-2  
Bulk-1/(Bulk-2 blank)  
I-1 and I-2  
I-5 and I-6

2. Retain this sheet in front of manual for reference purposes.

By Order of the Secretary of the Army:

Official:



**MILTON H. HAMILTON**  
*Administrative Assistant to the  
Secretary of the Army*

02843

**GORDON R. SULLIVAN**  
*General, United States Army  
Chief of Staff*

**DISTRIBUTION:**

To be distributed in accordance with DA Form 12-25-E, block no. 0098, requirements for TM 5-4120-374-23P.



**Organizational and Direct Support Maintenance  
Repair Parts and Special Tools List  
for  
AIR CONDITIONER, HORIZONTAL  
9,000 BTU/HR  
MODEL FM 9000  
NSN 4120-01-125-3947**

Current as of 9 September 1989

Approved for public release; distribution is unlimited.

---

**REPORTING ERRORS AND RECOMMENDING IMPROVEMENTS**

You can help improve this manual. If you find any mistake or if you know of a way to improve the procedures, please let us know. Mail your letter, DA Form 2028 (Recommended Changes to Publications and Blank Forms), or DA Form 2028-2 located in the back of this manual direct to: Commander, U.S. Army Troop Support Command, ATTN: AMSTR-MCTS, 4300 Goodfellow Blvd, St. Louis, MO 63120-1798. A reply will be furnished directly to you.

---

**TABLE OF CONTENTS**

		Page	Illust/ Figure
Section I.	Introduction . . . . .	1	
Section II.	Repair Parts List		
Group 01	Housing		
	Panels and Grills . . . . .	1-1	1
	Housing . . . . .	2-1	2
Group 02	Filter		
	Air Filter . . . . .	3-1	3
Group 03	Electric Motor and FANS		
	Electric Motor and Fans . . . . .	4-1	4
Group 04	Starting and Protective Device		
	Switches and Capacitor . . . . .	5-1	5
Group 05	Wiring		
	Wiring . . . . .	6-1	6
Group 06	Gas Compressor, Piping and Components		
	Gas Compressor, Piping and Components . . . . .	7-1	7
Group 07	Bulk Materials		
	Bulk . . . . .	Bulk-1	Bulk
Section III.	Special Tools List (Not Applicable) . . . . .		
Section IV.	Cross Reference Indexes . . . . .		
	National Stock Number Index . . . . .	I-1	
	Part Number Index . . . . .	I-2	
	Figure and Item Number index . . . . .	I-6	

\*This manual supersedes TM 5-4120-374-23P, dated 18 April 1984, including all changes.



ORGANIZATIONAL AND DIRECT SUPPORT  
MAINTENANCE REPAIR PARTS AND  
SPECIAL TOOLS LIST

SECTION I. INTRODUCTION

**1. SCOPE.** This RPSTL lists and authorizes spares and repair parts; special tools; special test, measurement, and diagnostic equipment (TMDE); and other special support equipment required for performance of Organizational and Direct Support Maintenance of the Air Conditioner, Horizontal. It authorizes the requisitioning, issue, and disposition of spares, repair parts and special tools as indicated by the source, maintenance and recoverability (SMR) codes.

**2. GENERAL.** In addition to this section, Introduction, this Repair Parts and Special Tools List is divided into the following sections:

**a. Section II. Repair Parts List.** A list of spares and repair parts authorized by this RPSTL for use in the performance of maintenance. The list also includes parts which must be removed for replacement of the authorized parts. Parts lists are composed of functional groups in ascending alphanumeric sequence, with the parts in each group listed in ascending figure and item number sequence. Bulk materials are listed in item name sequence. Repair parts kits are listed separately in their own functional group within Section II. Repair parts for repairable special tools are also listed in this section. Items listed are shown on the associated illustration(s)/figure(s).

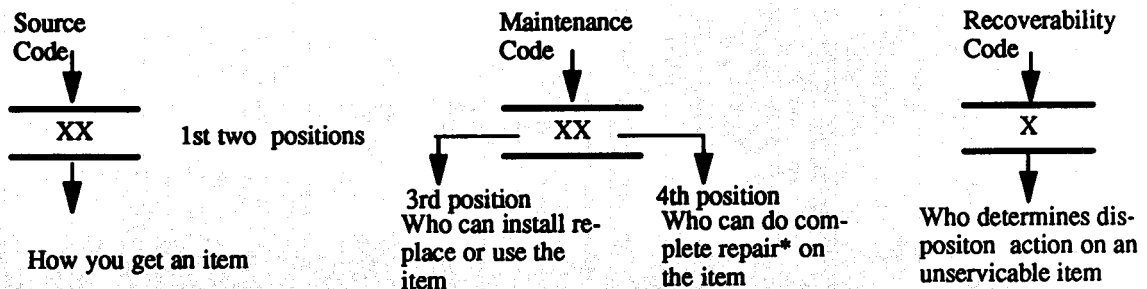
**b. Section III. Special Tools List.** A list of special tools, special TMDE, and other special support equipment authorized by this RPSTL (as indicated by Basis of Issue (BOI) information in DESCRIPTION AND USABLE ON CODE column) for the performance of maintenance.

**c. Section IV. Cross-references Indexes.** A list, in National Item Identification Number (NIIN) sequence, of all National stock numbered items appearing in the listing, followed by a list in alphanumeric sequence of all part numbers appearing in the listings. National stock numbers and part numbers are cross referenced to each illustration figure and item number appearance. The figure and item number index lists figure and item number in alphanumeric sequence and cross references NSN, FSCM and part number.

**3. EXPLANATION OF COLUMNS (SECTIONS II AND III).**

**a. ITEM NO. (Column (1)).** Indicates the number used to identify items called out in the illustration.

**b. SMR Code (Column (2)).** The Source, Maintenance, and Recoverability (SMR) code is a 5-position code containing supply/requisitioning information, maintenance category authorization criteria, and disposition instruction, as shown in the following breakout:



**NOTE**

\*Complete Repair: Maintenance capacity, capability, and authority to perform all corrective maintenance tasks of the "Repair" function in a use/user environment in order to restore serviceability to a failed item.

(1) **Source Code.** The source code tells you how to get an item needed for maintenance, repair, or overhaul of an end item/equipment. Explanations of source codes follows:

Code	Explanation
PA PB PC** PD PE PF PG	Stocked items; use the applicable NSN to request/requisition items with these source codes. They are authorized to the category indicated by the code entered in the 3d position of the SMR code.
**NOTE: Items coded PC are subject to deterioration.	
KD KF KB	Items with these codes are not to be requested/requisitioned individually. They are part of a kit which is authorized to the maintenance category indicated in the 3d position of the SMR code. The complete kit must be requisitioned and applied.

Code	Explanation
MO—(Made at org. AVUM Level MF—(Made at DS/ AVUM Level MH—(Made at GS Level) ML—Made at Specialized Repair Activity (SRA) MD—(Made at Depot)	Items with these codes are not to be requested/requisitioned individually. They must be made from bulk material which is identified by the part number in the DESCRIPTION and USABLE ON CODE (UOC) column and listed in the Bulk Material group of the repair parts list in this RPSTL. If the item is authorized to you by the 3d position code of the SMR code, but the source code indicates it is made at a higher level, order the item from the higher level of maintenance.



AO -- (Assembled by org/AVUM Level)
AF -- (Assembled by DS/AVIM Level)
AH -- (Assembled by GS Category)
AL -- (Assembled by SRA)
AD -- (Assembled by Depot)

Explanation

items with these codes are not to be requested/requisitioned individually. The parts that makeup the assembled item must be requisitioned or fabricated and assembled at the level of maintenance indicated by this source code. If the 3d position code of the SMR code authorizes you to replace the item, but the source code indicates the items are assembled at a higher level, order the item from the higher level of maintenance.

Code

Explanation

- XA -- Do not requisition "XA" -coded item. Order its next higher assembly. (Also, refer to the NOTE below.)
- XB -- If an "XB" item is not available from salvage, order it Using the FSCM and part number given.
- XC -- Installation drawing, diagram, instruction sheet, field service drawing, that is identified by manufacturer's part number.
- XD -- Item is not stocked. Order an "XD" -coded item through normal supply channels using the FSCM and part number given, if no NSN is available.

NOTE

Cannibalization or controlled exchange, when authorized, may be used as a source of supply for items with the above source codes, except for those source coded "XA" or those aircraft support items restricted by requirements of AR 750-1.

- (2) Maintenance Code. Maintenance codes tells you the level(s) of maintenance authorized to USE and REPAIR support items. The maintenance codes are entered in the third and fourth positions of the SMR code as follows:
  - (a) The maintenance code entered in the third position tells you the lowest maintenance level authorized to remove, replace, and use an item. The maintenance code entered in the fourth position will indicate authorization to one of the following levels of maintenance.

Code

Application/Explanation

- C —Crew or operator maintenance done within organization or aviation unit maintenance.
- O —Organizational or aviation unit category can remove, replace, and use the item.

F -Direct support or aviation intermediate level can remove, replace, and use the item.

H -General support level can remove, replace, and use the item.

L -Specialized repair activity can remove, replace, and use the item.

D -Depot level can remove, replace, and use the item.

- (b) The maintenance code entered in the fourth position tells whether or not the item is to be repaired and identifies the lowest maintenance level with the capability to do complete repair (i.e., perform all authorized repair functions.) NOTE: Some limited repair may be done on the item at a lower level of maintenance, if authorized by the Maintenance Allocation Chart (MAC) and SMR codes. This position will contain one of the following maintenance codes.

Code	Application/Explanation
0	-Organizational or (aviation unit) is the lowest level that can do complete repair of the item.
F	-Direct support or aviation intermediate is the lowest level that can do complete repair of the item.
H	-General Support is the lowest level that can do complete repair of the item.
L	-Specialized repair activity is the lowest level that can do complete repair of the item.
D	-Depot is the lowest level that can do complete repair of the item.
Z	-Nonreparable. No repair is authorized.
B	-No repair is authorized. (No parts or special tools are authorized for the maintenance of a "B" coded item). However, the item may be reconditioned by adjusting, lubricating, etc., at the user level.

- (3) Recoverability Code.** Recoverability codes are assigned to items to indicate the disposition action on unserviceable items. The recoverability code is entered in the fifth position of the SMR Code as follows:

Recoverability Codes	Application/Explanation
Z	-Nonreparable item. When unserviceable, condemn and dispose of the item at the level of maintenance shown in 3d position of SMR Code.

Recoverability  
Codes

Application/Explanation

- O -Reparable item. When uneconomically reparable, condemn and dispose of the item at organizational or aviation unit level
- F -Reparable item. When uneconomically reparable, condemn and dispose of the item at the direct support or aviation intermediate level
- H -Reparable item. When uneconomically reparable, condemn and dispose of the item at the general support level.
- D -Reparable item. When beyond lower level repair capability, return to depot. Condemnation and disposal of item not authorized depot level.
- L -Reparable item. Condemnation and disposal not authorized below cialized repair activity (SRA).
- A -Item requires special handling or condemnation procedures because of specific reasons (e.g., precious metal content, high dollar value, critical material, or hazardous material). Refer to appropriate manuals/directives for specific instructions.

**c. FSCM (Column (3)).** The Federal supply Code for Manufacturer (FSCM) is a 5-digit numeric code which is used to identify the manufacturer, distributor, or Government agency, etc., that supplies the item.

**d. PART NUMBER (Column (4)).** Indicates the primary number used by the manufacturer, (individual, company, firm, corporation, or Government activity), which controls the design and characteristics of the item by means of its engineering drawings, specifications standards, and inspection requirements to identify an item or range of items.

NOTE

When you use an NSN to requisition an item, the item you receive may have a different part number from the part ordered.

**e. DESCRIPTION AND USABLE ON CODE (UOC) (Column (5)).** This column includes the following information:

- (1) The Federal item name and, when required, a minimum description to identify the item.
- (2) The physical security classification of the item is indicated by the parenthetical entry, e.g., Phy Sec CI - Confidential, Phy Sec CI (S) - Secret, Phy Sec CI (T) - Top Secret.
- (3) Items that are included in kits and sets are listed below the name of the kit or set.
- (4) Spare/repair parts that make up an assembled item are listed immediately following the assembled item line entry.
- (5) Part numbers for bulk materials are referenced in this column in the line item entry for the item to be manufactured/fabricated.
- (6) When the item is not used with all serial numbers of the same model, the effective serial numbers are shown on the last line(s) of the description (before UOC).

- (7) The usable on code, when applicable (see paragraph 5, Special Information).
- (8) In the Special Tools List section, the basis of issue (BOI) appears as the last line(s) in the entry for each special tool, special TM DE, and other special support equipment. When density of equipments supported exceeds density spread indicated in the basis of issue, the total authorization is increased proportionately.
- (9) The statement "END OF FIGURE" appears just below the last item description in Column 5 for a given figure in both Section II and Section III.
- (10) The indenture, shown as dots appearing before the repair part, indicates that the item is a repair part of the next higher assembly.

**f. QTY (Column (6)).** The QTY (quantity per figure column) indicates the quantity of the item used in the breakout shown on the illustration figure, which is prepared for a functional group, subfunctional group, or an assembly. A "V" appearing in this column in lieu of a quantity indicates that the quantity is variable and may vary from application to application.

#### 4. EXPLANATION OF COLUMNS (SECTION IV).

##### a. NATIONAL STOCK NUMBER (NSN) INDEX.

- (1) **STOCK NUMBER column.** This column lists the NSN by National item identification number (NIIN) sequence. The NIIN consists of the last nine digits of the NSN  
NSN, i.e. (5305-01-574-1467).  
NIIN

When using this column to locate an item, ignore the first 4 digits of the NSN. However, the complete NSN should be used when ordering items by stock number.

- (2) **FIG. column.** This column lists the number of the figure where the item is identified/located. The figures are in numerical order in Section II and Section III.
- (3) **ITEM column.** The item number identifies the item associated with the figure listed in the adjacent FIG. column. This item is also identified by the NSN listed on the same line.

**b. PART NUMBER INDEX.** Part numbers in this index are listed by part number in ascending alphanumeric sequence (i.e., vertical arrangement of letter and number combination which places the first letter or digit of each group in order A through Z, followed by the numbers 0 through 9 and each following letter or digit in like order).

- (1) **FSCM column.** The Federal Supply Code for Manufacturer (FSCM) is a 5-digit numeric code used to identify the manufacturer, distributor, or Government agency, etc., that supplies the item.
- (2) **PART NUMBER column.** Indicates the primary number used by the manufacturer (individual, firm, corporation, or Government activity), which controls the design and characteristics of the item by means of its engineering drawings, specifications standards, and inspection requirements to identify an item or range of items.
- (3) **STOCK NUMBER column.** This column lists the NSN for the associated part number and manufacturer identified in the PART NUMBER and FSCM columns to the left.

(4) **FIG. column.** This column lists the number of the figure where the item is identified/located in Sections II and III.

(5) **ITEM column.** The item number is that number assigned to the item as it appears in the figure referenced in adjacent figure number column.

**c. FIGURE AND ITEM NUMBER INDEX.**

(1) **FIG. column.** This column lists the number of the figure where the item is identified/located in Section II and III.

(2) **ITEM column.** The item number is that number assigned to the item as it appears in the figure referenced in the adjacent figure number column.

(3) **STOCK NUMBER column.** This column lists the NSN for the item.

(4) **FSCM column.** The Federal Supply Code for Manufacturer (FSCM) is a 5-digit numeric code used to identify the manufacturer, distributor, or Government agency, etc., that supplies the item.

(5) **PART NUMBER column.** Indicates the primary number used by the manufacturer (individual, firm, corporation, or Government activity), which controls the design and characteristics of the item by means of its engineering drawings, specifications standards, and inspection requirements to identify an item or range of items.

**5. SPECIAL INFORMATION.**

**a. USABLE ON CODE.** The usable on code appears in the lower left corner of the Description column heading. Usable on codes are shown as "UOC: . . . ." in the Description Column (justified left) on the last line applicable item description/nomenclature. Uncoded items are applicable to all models.

**b. ASSOCIATED PUBLICATIONS.** The publications listed below pertains to the Lubricating and Servicing Unit and its components.

Publication	Short Title
TM 5-4120-374-14	Air Conditioner, Horizontal

**6. HOW TO LOCATE REPAIR PARTS.**

**a. When National Stock Number or Part Number is NOT known.**

(1) **First.** Using the table of contents, determine the assembly group or subassembly group to which the item belongs. This is necessary since figures are prepared for assembly groups and subassembly groups, and listings are divided into the same groups.

(2) **Second.** Find the figure covering the assembly group or subassembly group to which the item belongs.

(3) **Third.** Identify the item on the figure and note the item number.

(4) **Fourth.** Refer to the Repair Parts List for the figure to find the part number for the item number noted on the figure.

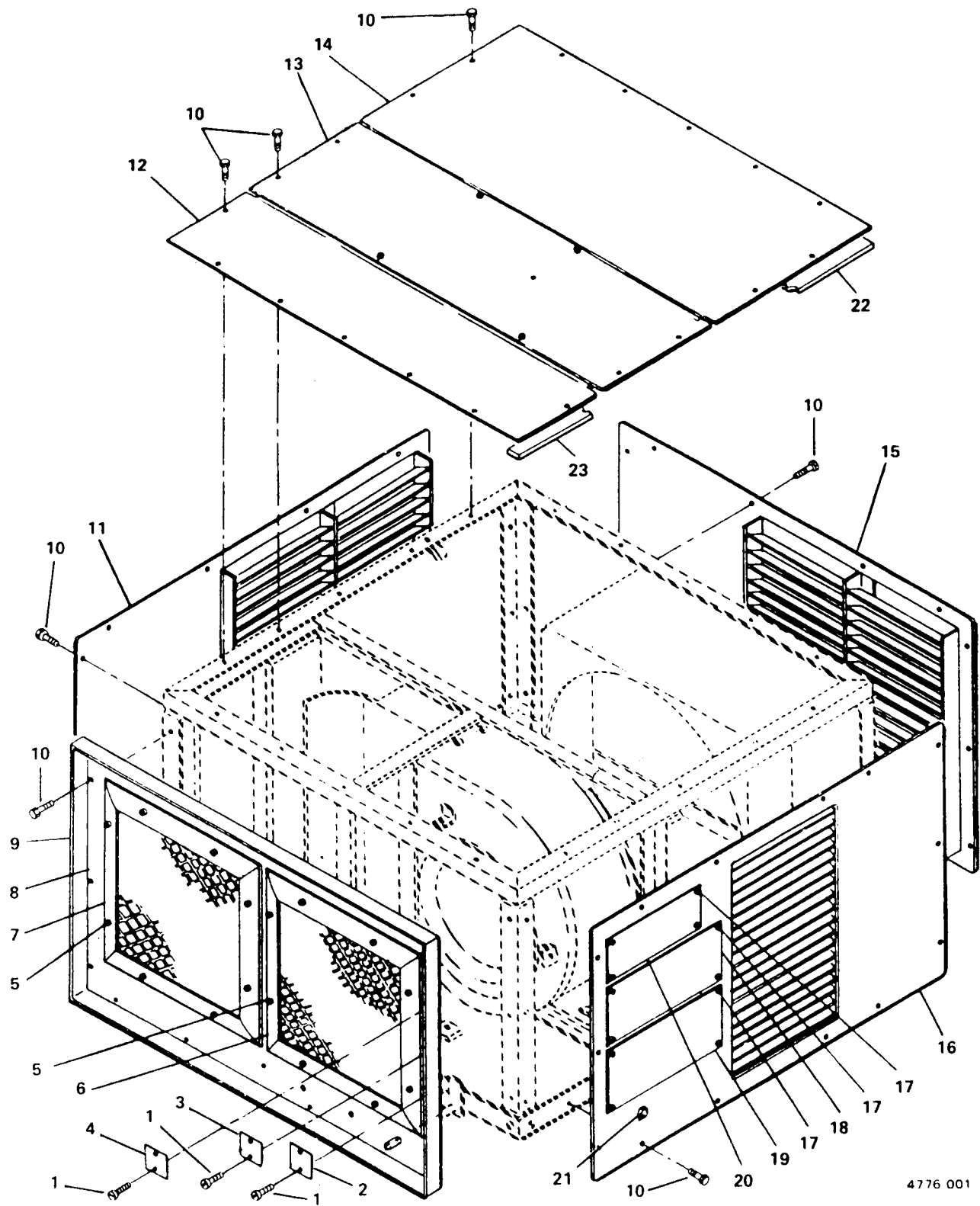
(5) **Fifth.** Refer to the Part Number Index to find the NSN, if assigned.

**b. When National Stock Number or Part Number is Known:**

- (1) **First.** Using the Index of National Stock Numbers and Part Numbers, find the pertinent National Stock Number or Part Number. The NSN index is in National Item Identification Number (NIIN) sequence (see c-4a.(1)). The part numbers in the Part Number index are listed in ascending alphanumeric sequence (see paragraph c-4.b). Both indexes cross-reference you to the illustration figure and item number of the item you are looking for.
- (2) **Second.** After finding the figure and item number, verify that the item is the one you are looking for, then locate the item number in the repair parts list for the figure.

**7. ABBREVIATIONS.** Abbreviations used in this manual are listed in MIL-STD-12.





4776 001

Figure 1. Panels and Grills.



## SECTION II

TM5-4120-374-23P

(1) ITEM NO	(2) SMR CODE	(3) FSCM	(4) PART NUMBER	(5) DESCRIPTION AND USABLE ON CODE (UOC)	(6) QTY
GROUP 01 HOUSING					
FIG. 1 PANELS AND GRILLS					
1	PAOZZ	96906	MS21318-7	SCREW,DRIVE	6
2	XBOZZ	97403	13225E8603-3	PLATE,INFORMATION	1
3	XBOZZ	97403	13225E8603-2	PLATE,INFORMATION	1
4	XBOZZ	97403	13225E8603-1	PLATE,INFORMATION	1
5	PAOZZ	96906	MS51957-47	SCREW,MACHINE	16
6	PBOZZ	97403	13221E4578	PIPE,AIRE CONDITION	1
7	XBOZZ	97403	13221E4577	GRILL, AIR DIFFUSER	1
8	XBOZZ	97403	13221E4576	PANEL,FRONT	1
9	XBOZZ	97403	13221E4568	FRAME,FRONT	1
10	PAOZZ	96906	MS51957-45	SCREW,MACHINE	94
11	XBOZZ	97403	13221E4563	PANEL,LEFT SIDE	1
12	PAOZZ	97403	13221E4530	PANEL,TOP FRONT	1
13	PAOZZ	97403	13221E4531	PANEL,TOP CENTER	1
14	XBOZZ	97403	13221E4532	PANEL,TOP REAR	1
15	PBOZZ	97403	13221E4569	PANEL,REAR	1
16	XBOZZ	97403	13221E4562	PANEL,SIDE R H	1
17	PAOZZ	96906	MS20604B4W2	RIVET,BLIND	12
18	PBOZZ	97403	13221E4552	PLATE,INSTRUCTION	1
19	XBOZZ	97403	13221E4584	PLATE,WIRING	1
20	XBOZZ	81349	MIL-P-15024	PLATE, IDENTIFICATION, TYPE H, SIZE 21	1
21	PAOZZ	28520	SR8P2	BUSHING,STRAIN RELI	1
22	MOOOZ	81349	MIL-G-20241	GASKET, WOOL FELT, 23.875 IN LG, MAKE FROM CLOTH, P/N MILG20241	1
23	MOOOZ	97403	13221E4580-14	GASKET,WOOL FELT, 23.875 IN LG, MAKE FROM CLOTH, P/N MILG20241	1

END OF FIGURE

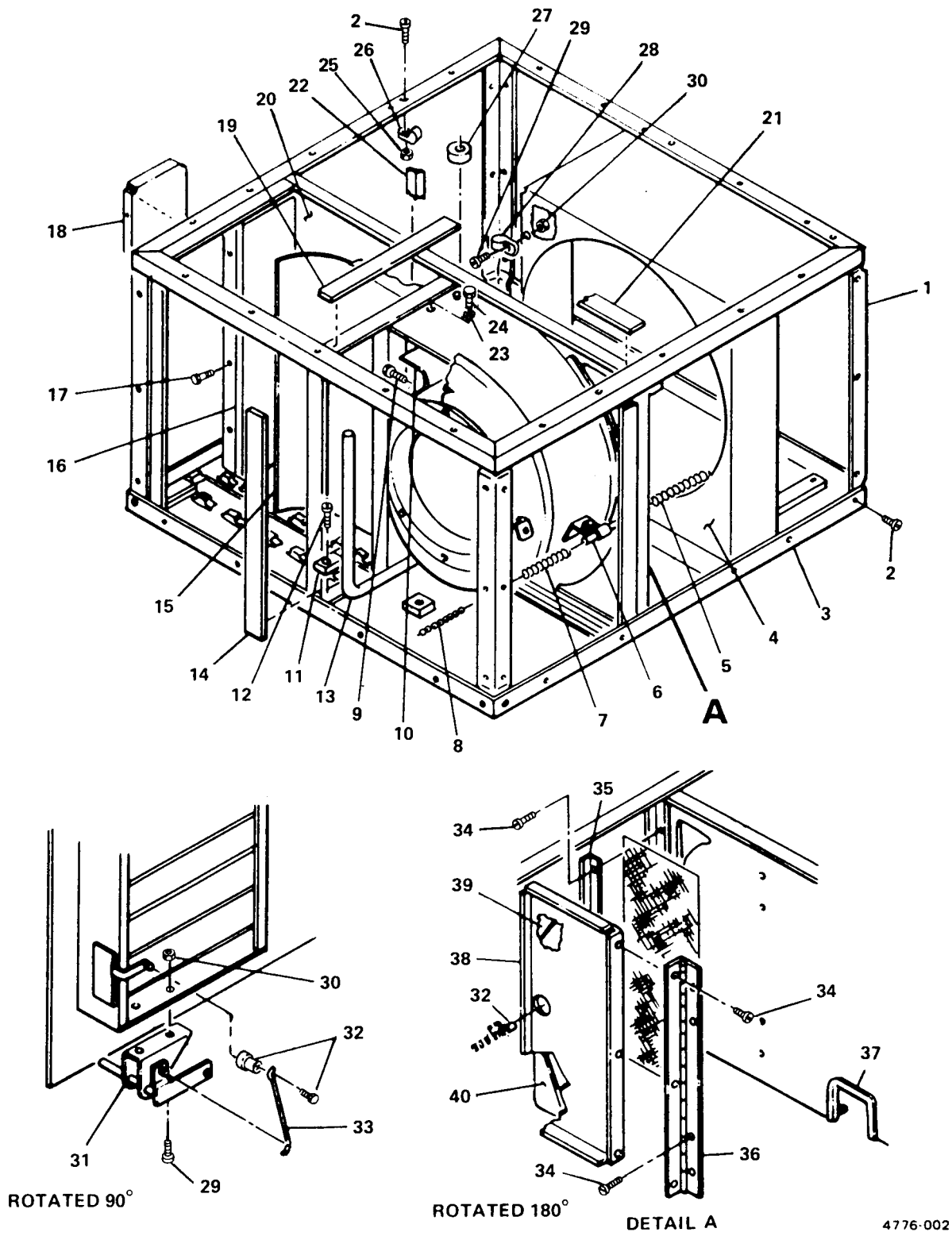


Figure 2. Housing.

## SECTION II

TM5-4120-374-23P

(1) ITEM NO	(2) SMR CODE	(3) FSCM	(4) PART NUMBER	(5) DESCRIPTION AND USABLE ON CODE (UOC)	(6) QTY
GROUP 01 HOUSING					
FIG. 2 HOUSING					
1	XBOZZ	97403	13221E4541	FRAME	1
2	PAOZZ	96906	MS35191-272	SCREW,MACHINE	9
3	XBOZZ	97403	13221E4550	BULKHEAD ASSEMBLY	1
4	XBOZZ	97403	13221E4545	SHROUD,CONDENSER	1
5	PAOZZ	97403	13225E8604	SPRING,HELICAL,	1
6	XBOZZ	97403	13216E6108-7	CONTROL ASSY	1
7	PAOZZ	96906	MS24586C48	SPRING,,HELICAL,	1
8	PAOZZ	06845	C681660-1	CHAIN,BEAD ASSEMBLY,BEAD,CHAIN, WELDLESS,TYPE II,CLASS 5,SIZE 10,12 IN LG	1
9	PAOZZ	96906	MS51957-29	SCREW,MACHINE	2
10	XBOZZ	97403	13221E4564	CUT-OFF,BLOWER	1
11	XBOZZ	97403	13221E4542	SPACER,EVAPORATOR	2
12	PAOZZ	96906	MS35191-275	SCREW,MACHINE	8
13	MFFFF	81346	ASTM-B280	TUBE,COPPER 0.500 X 0.32 WALL THK X 14 IN LG, MAKE FROM TUBE, P/N ASTM-B280.500 OD	1
14	MFFFZ	97403	13221E4580-25	GASKET,WOOL FELT, 15.25 IN LG, MAKE FROM FELT CLOTH, P/N MILG20241.	1
15	XBOZZ	97403	13221E5746	DEFLECTOR,AIR	1
16	MFFFZ	97403	13221E4580-90	INSULATION,PLASTIC, 14.75 IN LG, MAKE FROM INSULATION BLOCK, P/N MIL- I-14511	1
17	PAOZZ	96906	MS51957-44	SCREW,MACHINE	30
18	XBOZZ	97403	13221E4544	BAFFLE	1
19	MFFFZ	81349	MIL-G-20241	GASKET,WOOL FELT, 9.38 IN LG, MAKE FROM FELT CLOTH, P/N MILG20241	2
20	MFFFZ	97403	13221E4580-89	INSULATION,PLASTIC, 14.75 IN LG, MAKE FROM INSULATION BLOCK, P/N MIL- I-14511	1
21	MFFFZ	97403	13221E4580-65	GASKET,WOOD FELT, 24 IN LG, MAKE FROM FELT CLOTH, P/N MILG20241	1
22	XBOZZ	97403	13221E4566	RETAINER,INSULATION	1
23	PAOZZ	96906	MS15795-841	WASHER,FLAT	4
24	PAOZZ	96906	MS51957-45	SCREW,MACHINE	94
25	PAOZZ	96906	MS21083C3	NUT,SELF-LOCKING	1
26	XDFZZ	96906	MS21919DG4	CLAMP,LOOP	3
27	XBOZZ	97403	13225E8602	SPACER	4
28	PAOZZ	96906	MS21919-DG8	CLAMP,LOOP	1
29	PAFZZ	96906	MS51957-43	SCREW,MACHINE	3
30	PAFZZ	96906	MS21083C08	NUT,SELF-LOCKING,	3
31	PBOZZ	97403	13221E4570	VENT LINKAGE ASSY	1
32	PAOZZ	70436	FT191	FITTING ASSY	1
33	XDFFF	97403	13221E4580	WIRE,CORROSION RES	1
34	PAFZZ	96906	MS51957-43	SCREW,MACHINE	1
35	XBOZZ	97103	13221E4555	RETAINER,SCREEN	1
36	XBOZZ	97403	13221E4556	HINGE,DOOR	1

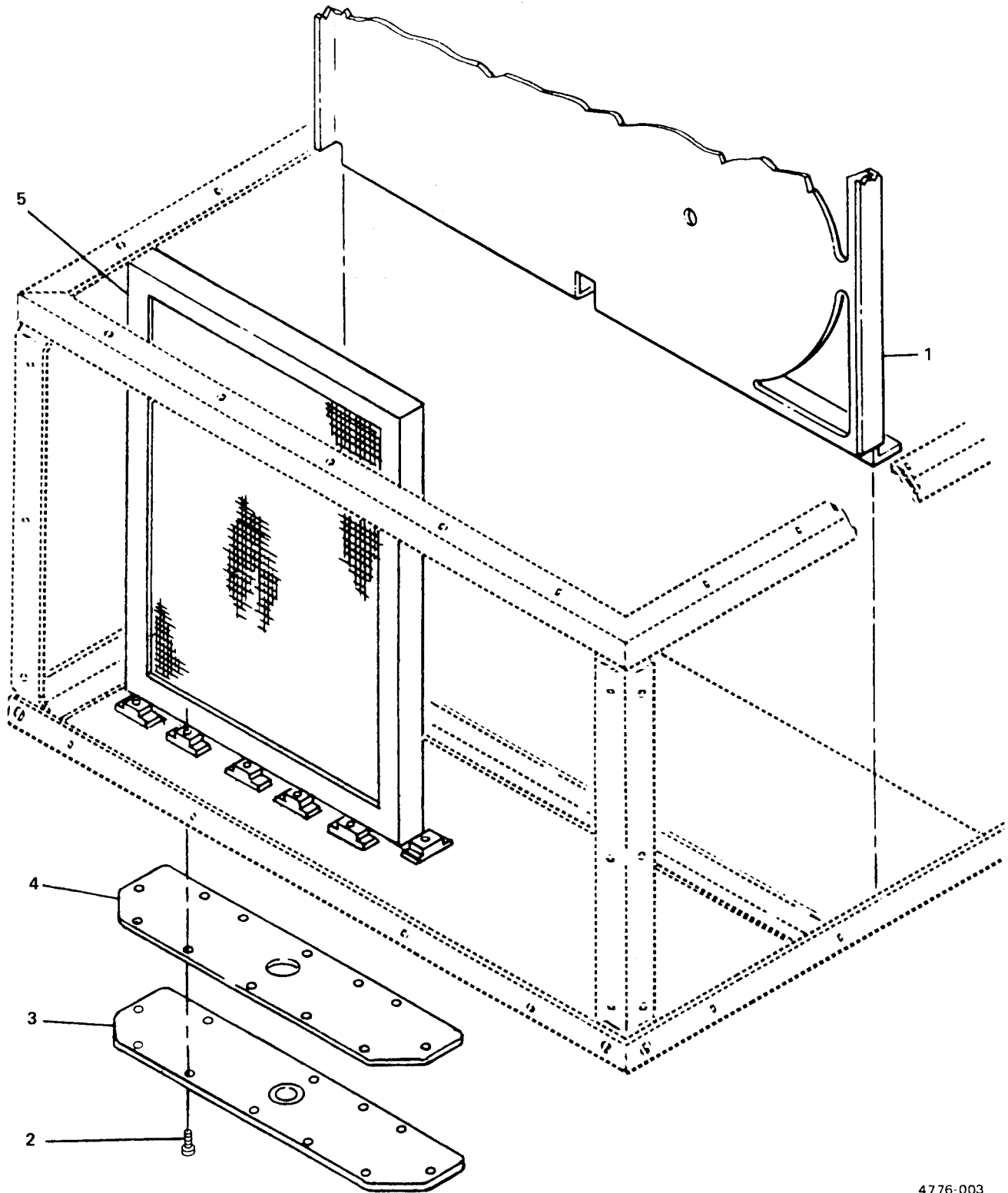
## SECTION II

TM5-4120-374-23P

(1) ITEM NO	(2) SMR CODE	(3) FSCM	(4) PART NUMBER	(5) DESCRIPTION AND USABLE ON CODE (UOC)	(6) QTY
37	PAOZZ	96906	MS21266-1N	GROMMET, NONMETALLIC EDGING FOR 0.015 TO 0.052 SHEET THICKNESS NYLON	1
38	XBOZZ	97403	13221E4559	DOOR	1
39	XBOZZ	97403	13221E4558	SEAL, UPPER DOOR	1
40	XDOZZ	97403	13221E4557	SEAL, LOWER DOOR	1

END OF FIGURE





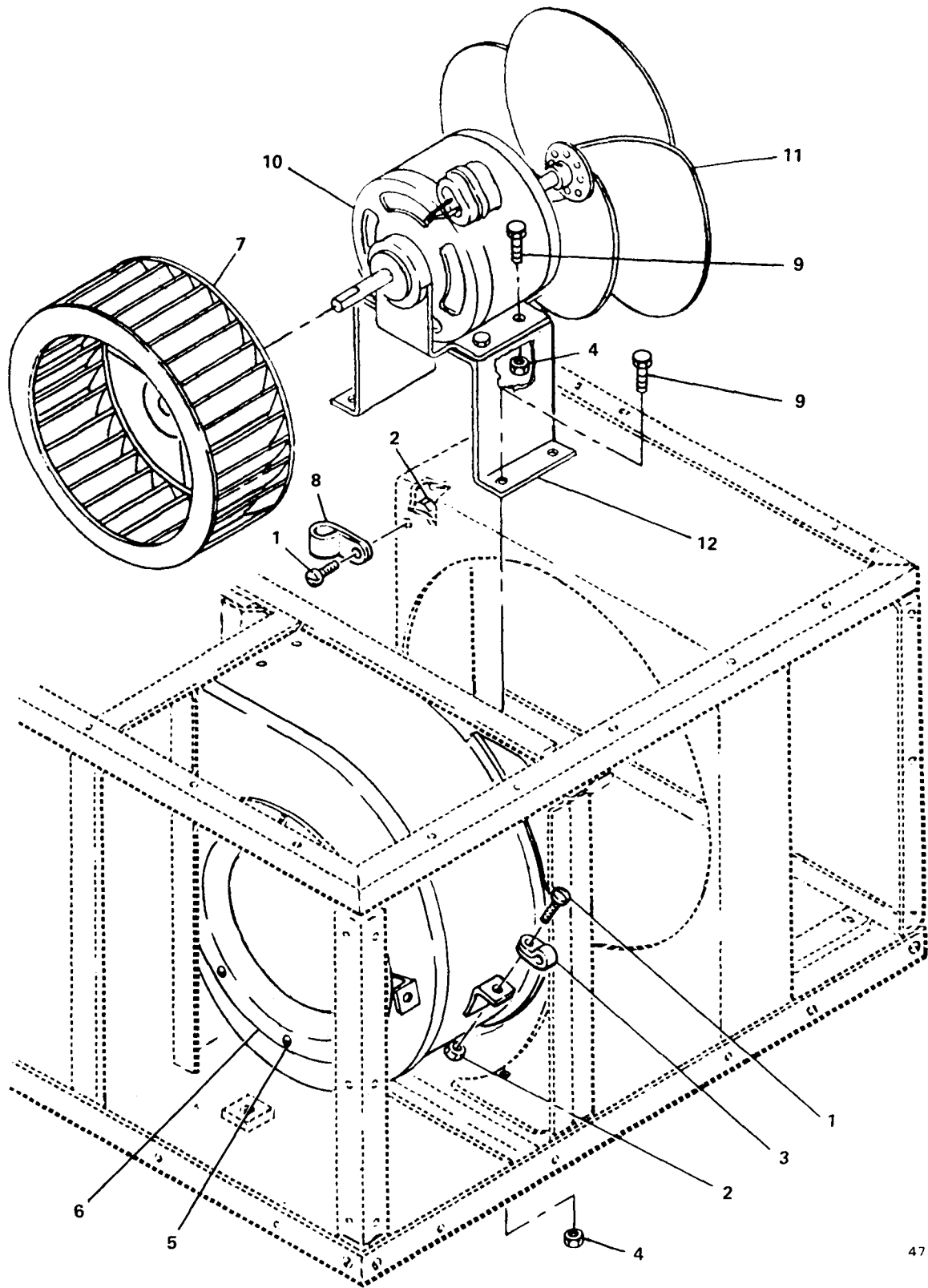
4776-003

Figure 3. Air Filter.

## SECTION II

TM5-4120-374-23P

(1) ITEM NO	(2) SMR CODE	(3) FSCM	(4) PART NUMBER	(5) DESCRIPTION AND USABLE ON CODE (UOC)	(6) QTY
GROUP 02 FILTER					
FIG. 3 AIR FILTER					
1	MOOOZ	97403	13221E4580-82	GASKET,WOOL FELT, 14 IN LG, MAKE FROM FELT CLOTH, P/N MILG20241	3
2	PAOZZ	96906	MS51957-46	SCREW,MACHINE	12
3	XBOZZ	97403	13221E4536	COVER,FILTER	1
4	PAOZZ	97403	13221E4537	GASKET	1
5	PAOZZ	97403	13221E4533	FILTER ELEMENT,AIR	1
END OF FIGURE					



4776-004

Figure 4. Electric Motor and Fans.

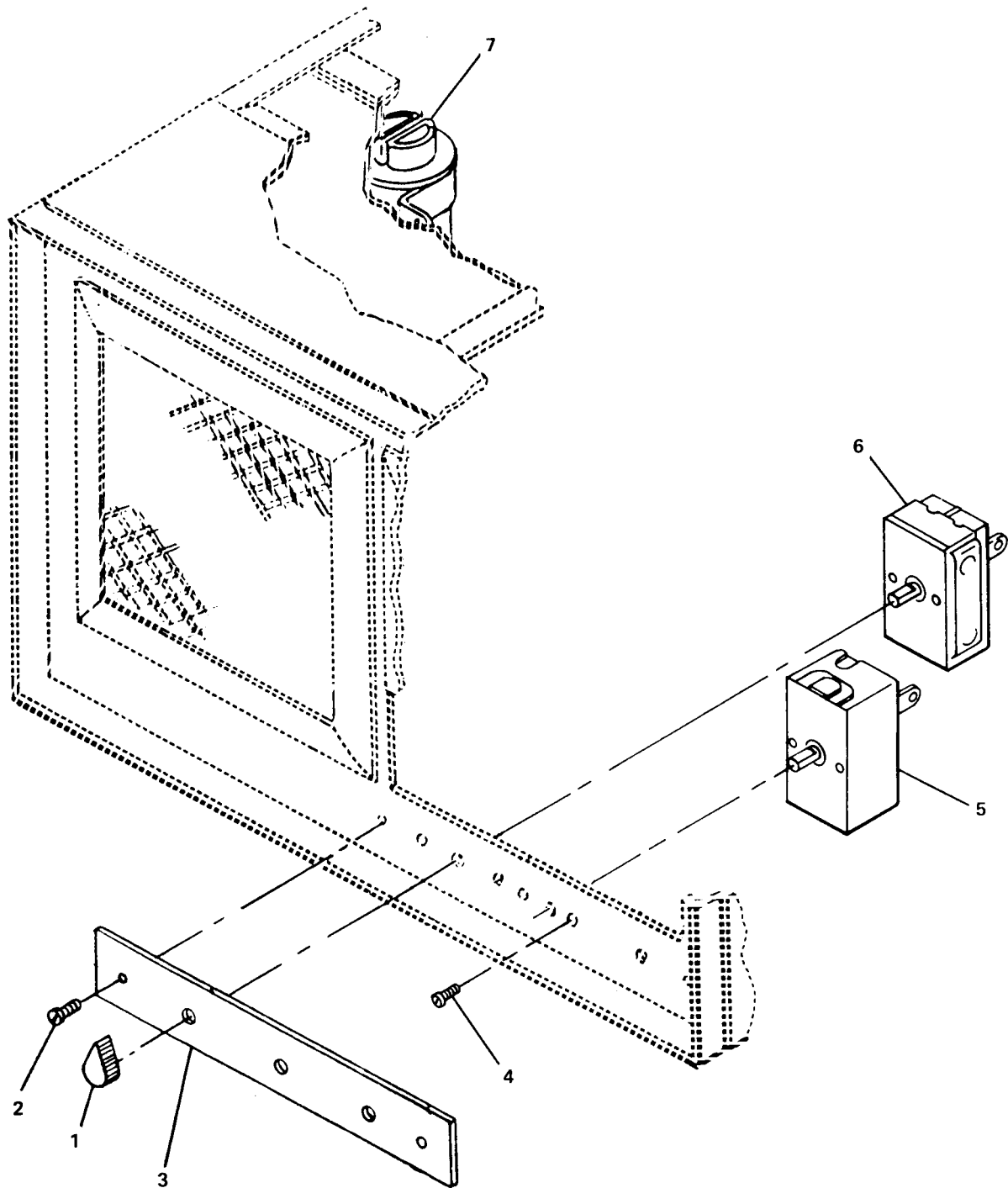


## SECTION II

TM5-4120-374-23P

(1) ITEM NO	(2) SMR CODE	(3) FSCM	(4) PART NUMBER	(5) DESCRIPTION AND USABLE ON CODE (UOC)	(6) QTY
GROUP 03 ELECTRIC MOTOR AND FANS					
FIG. 4 ELECTRIC MOTOR AND FANS					
1	PAFZZ	96906	MS51957-43	SCREW,MACHINE	2
2	PAFZZ	96906	MS21083C08	NUT,SELF-LOCKING,HE	2
3	PAOZZ	96906	MS21919DG8	CLAMP,LOOP	1
4	PAOZZ	96906	MS21045C4	NUT,SELF-LOCKING,	8
5	PAOZZ	96906	MS51957-27	SCREW,MACHINE	6
6	XBOZZ	97403	13221E4547	INTAKE RING,BLOWER	1
7	PAOZZ	97403	13225E8605	IMPELLER,FAN,CENTRI	1
8	PAOZZ	96906	MS21919DG3	CLAMP,LOOP	1
9	PAOZZ	96906	MS90727-4	SCREW,CAP,HEXAGON	8
10	PAOZZ	97403	13221E4583	MOTOR,ALTERNATING	1
11	PAOZZ	97403	13221E4575	IMPELLER,FAN,AXIAL	1
12	XBOZZ	97403	13221E4539	BRACKET,MOTOR	1

END OF FIGURE



4776-005

Figure 5. Switches and Capacitor.

## SECTION II

TM5-4120-374-23P

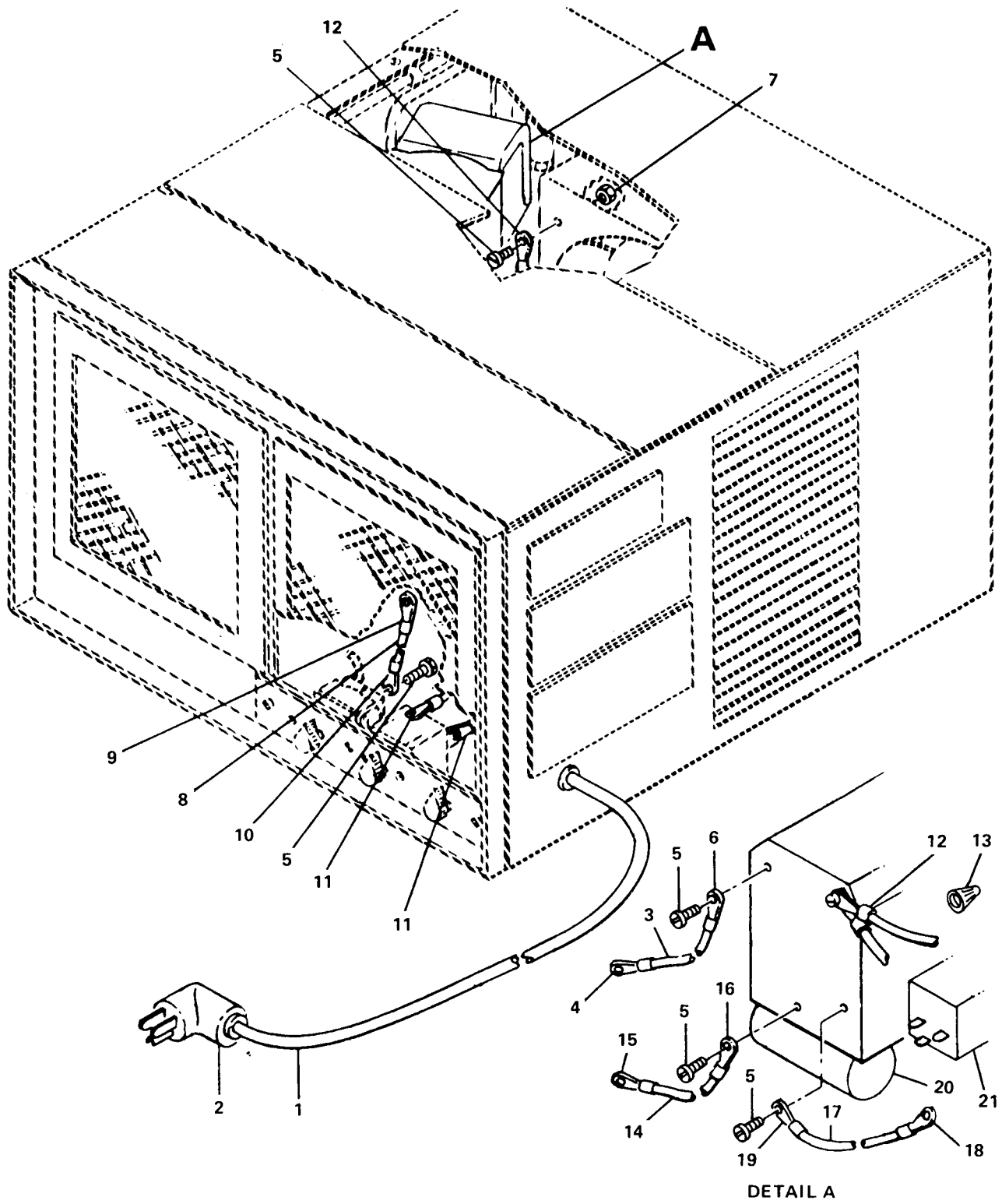
(1) ITEM NO	(2) SMR CODE	(3) FSCM	(4) PART NUMBER	(5) DESCRIPTION AND USABLE ON CODE (UOC)	(6) QTY
-------------------	--------------------	-------------	-----------------------	---	------------

GROUP 04 STARTING AND PROTECTIVE  
DEVICES

FIG. 5 SWITCHES AND CAPACITOR

1	PAOZZ	96906	MS91528-1A2B	KNOB	3
2	PAOZZ	96906	MS51957-28	SCREW, MACHINE	12
3	XBOZZ	97403	13221E4567	PLATE, CONTROL PANEL	1
4	PAOZZ	96906	MS35190-250	SCREW, MACHINE	4
5	PAOZZ	76854	240T6HPC	SWITCH, ROTARY	1
6	PAOZZ	97403	13221E4554	SWITCH, THERMOSTATIC	1
7	PAOZZ	01002	97F3136	CAPACITOR, FIXED, PAP	1

END OF FIGURE



4776-006

Figure 6. Wiring.

## SECTION II

TM5-4120-374-23P

(1) ITEM NO	(2) SMR CODE	(3) FSCM	(4) PART NUMBER	(5) DESCRIPTION AND USABLE ON CODE (UOC)	(6) QTY
GROUP 05 WIRING					
FIG. 6 WIRING					
1	MOOOZ	97403	13221E4580-19	WIRE,ELECTRICAL, 13 FT LG, MAKE FROM CABLE, P/N CO-03HGF(3/14)0565	1
2	PAOZZ	81348	WC596-13-3	CONNECTOR,PLUG,ELEC ELECTRICAL POWER WC596/13-2	1
3	MOOOZ	97403	13221E4585-7	LEAD,ELECTRICAL, MAKE FROM CABLE, P/N CO-03HGF(3/14)0565	1
4	PAOZZ	97403	13216E6191-3	TERMINAL,QUICK DISC	3
5	PAOZZ	96906	MS35218-26	SCREW,MACHINE	1
6	PAOZZ	96906	MS25036-156	TERMINAL,LUG	3
7	PAOZZ	96906	MS21083C06	NUT,SELF-LOCKING,	1
8	MOOOZ	97403	13221E4585-6	LEADS,ELECTRICAL, MAKE FROM ELECTRICAL WIRE, P/N M5086/1-14-9	1
9	PAOZZ	96906	MS25036-153	TERMINAL,LUG	1
10	PAOZZ	96906	MS25036-107	TERMINAL,LUG	1
11	PAOZZ	96906	MS25036-107	TERMINAL,LUG	2
12	PAOZZ	96906	MS25036-153	TERMINAL,LUG	3
13	XBOZZ	97403	13215E1719	CONNECTOR,ITEM	1
14	MOOOZ	97403	13221E4585-9	LEAD,ELECTRICAL, MAKE FROM CABLE, P/N CO-03HGF(3/14)0565	1
15	PAOZZ	97403	13216E6191-3	TERMINAL,QUICK DISC	3
16	PAOZZ	96906	MS25036-156	TERMINAL,LUG	3
17	MOOOZ	97403	13221E4585-8	LEAD,ELECTRICAL MAKE FROM ELECTRICAL WIRE P/N M5086/1-14-9	1
18	PAOZZ	97403	13216E6191-3	TERMINAL,QUICK DISC	3
19	PAOZZ	96906	MS25036-156	TERMINAL,LUG	3
20	XDFZZ	56289	014-0008-71	CAPACITOR,FIXED,ELE	1
21	PAFZZ	14569	040-0088-04	RELAY,ELECTROMAGNET	1

END OF FIGURE

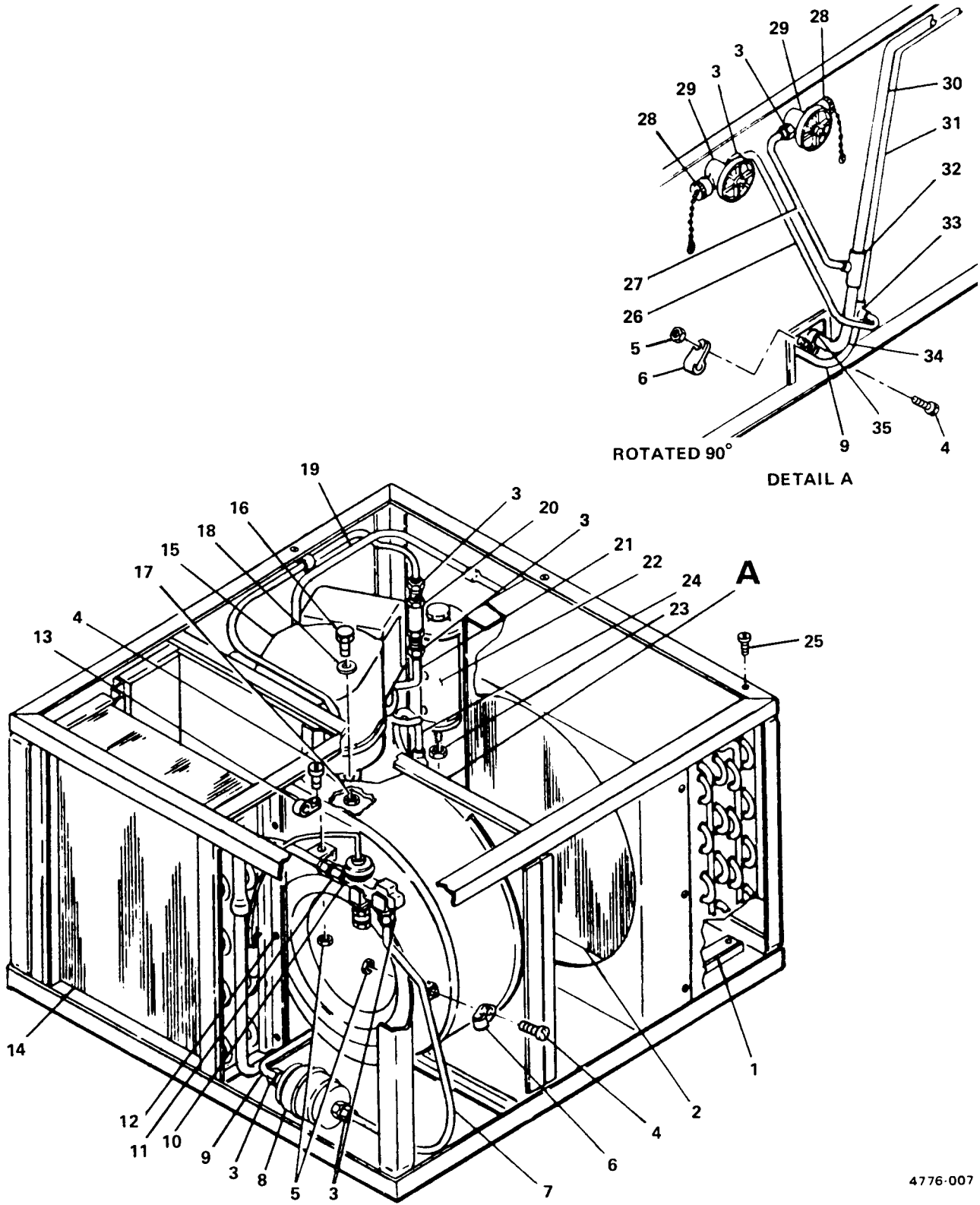


Figure 7. Gas Compressor, Piping and Components.

## SECTION II

CHANGE 1

TM5-4120-374-23P

(1) ITEM NO	(2) SMR CODE	(3) FSCM	(4) PART NUMBER	(5) DESCRIPTION AND USABLE ON CODE (UOC)	(6) QTY
GROUP 06 GAS COMPRESSOR, PIPING AND COMPONENTS					
FIG. 7 GAS COMPRESSOR, PIPING AND COMPONENTS					
1	XBFZZ	97403	13221E4543	SPACER, CONDENSER	2
2	PAFZZ	97403	13221E4534	COOLING COIL, AIR, DU	1
3	PAFZZ	96906	MS35872-2	NUT, TUBE COUPLING	7
4	PAFZZ	96906	MS51957-43	SCREW, MACHINE	3
5	PAFZZ	96906	MS21083C08	NUT, SELF-LOCKING	3
6	XDFZZ	96906	MS21919DG4	CLAMP, LOOP	3
7	MFFFF	81755	414474072/24IN	TUBE, COPPER 0.250 OD X 0.030 WALL THK X 24 IN LG, MAKE FROM METALLIC TUBE, P/N 4144774072	1
8	PAFZZ	97403	13214E3557	FILTER-DRIER, REFRIG	1
9	MFFFF	81755	414474072/30IN	TUBE, COPPER, 0.250 OD X 0.030 WALL THK X 30 IN LG, MAKE FROM METALLIC TUBE, P/N 414474072	1
10	PAFZZ	97403	13221E4574	VALVE, EXPANSION	1
11	PAFZZ	81343	SAEJ513	ADAPTER, STRAIGHT, PI INTERNAL FLARE TO EXTERNAL FLARE 6-8 0100105 SEA-J846	1
12	PAOZZ	96906	MS51957-44	SCREW, MACHINE	30
13	PAFZZ	96906	MS21919DG6	CLAMP, LOOP LOOP TYPE AIRCRAFT 0.375 ID X 0.622 WD	1
14	PAFZZ	97403	13221E4535	COOLING COIL, AIR, DU	1
15	PAFZZ	97403	13225E8600	COMPRESSOR UNIT, REF	1
16	PAFZZ	96906	MS90726-66	SCREW, CAP, HEXAGON	4
17	PAFZZ	96906	MS21045C6	NUT, SELF-LOCKING, HE REGULAR HEIGHT, 450 DEG F, 125 KSI FTU, .375-24 UNJF 3B	4
18	PAFZZ	96906	MS27183-14	WASHER, FLAT GEN PUPOSE 0.406 ID X 0.812 OD X 0.065 THK BSC	8
19	MFFFF	81346	ASTM-B280.375 OD /16IN	TUBE, COPPER, 16 IN LG, MAKE FROM METALLIC TUBE, P/N ASTM-B280.375 OD	1
20	PAFZZ	41947	A15966	INDICATOR, HUMIDITY	1
21	MFFFF	81755	414474072/12IN	TUBE, COPPER, 12 IN LG, MAKE FROM METALLIC TUBE, P/N 414474072	1
22	PBFZZ	97403	13221E4538	RECEIVER, LIQUID	1
23	PAFZZ	96906	MS16228-6C	NUT, SELF-LOCKING, HE	1
24	MFFFF	81755	414474072/10IN	TUBE, COPPER, 0.250X0.030 WALL THK 10 IN LG, MAKE FROM P/N 414474072	1
25	PAFZZ	96906	MS35191-273	SCREW, MACHINE	2
26	MFFFF	81755	414474072/15IN	TUBE, COPPER, 0.250 OD, 15 IN LG, MAKE FORM METALLIC TUBE P/N 414474072	1
27	MFFFF	81755	414474072/12IN	TUBE, COPPER, 0.250 OD, 12 IN LG, MAKE FROM METALLIC TUBE, P/N 414474072	1

## SECTION II

TM5-4120-374-23P

(1) ITEM NO	(2) SMR CODE	(3) FSCM	(4) PART NUMBER	(5) DESCRIPTION AND USABLE ON CODE (UOC)	(6) QTY
28	PAFZZ	97403	13219E9540	CAP AND CHAIN	2
29	PAFZZ	97403	13219E9499-1	VALVE,GLOBE	2
30	MFFFZ	81346	ASTM-B280.500 OD /14IN	TUBE,COPPER, 14 IN LG, MAKE FROM METALLIC TUBE, P/N ASTM-B280.500 OD	1
31	MFFFZ	81346	ASTM-B280.375 OD /24IN	TUBE,COPPER, 24 IN LG, MAKE FROM METALLIC TUBE, P/N ASTM-280.375 OD	1
32	PAFZZ	97403	13211E4043-12	TEE,TUBE	1
33	PAFZZ	96906	MS35929-2	TEE,TUBE 1/4 SIZE COPPER	1
34	MFFFF	81346	ASTM-B280.375 OD /15IN	TUBE,COPPER 15 IN LG, MAKE FROM METALLIC TUBE P/N ASTM-B280.375 OD	1
35	MFFFF	81755	414474072/18IN	TUBE,COPPER 18 IN LG, MAKE FROM METALLIC TUBE P/N 414474072	1

END OF FIGURE



SECTION II

CHANGE 1

TM5-4120-374-23P

(1) ITEM NO	(2) SMR CODE	(3) FSCM	(4) PART NUMBER	(5) DESCRIPTION AND USABLE ON CODE (UOC)	(6) QTY
				GROUP 07 BULK MATERIAL	
				FIG. BULK	
1	PAOZZ	81349	CO-03HGF(3/14)05 65	CABLE, POWER, ELECTRI	V
2	PAFZZ	81349	MILG20241	CLOTH, FELT	V
3	PAFZZ	81349	MIL-I-14511	INSULATION, BLOCK, TH	V
4	PAFZZ	81755	414474072	TUBE, METALLIC	V
5	PAFZZ	81346	ASTM-B280-80	TUBE, METALLIC .375 INCH OD	V
6	PAFZZ	81346	ASTM-B280	TUBE, METALLIC .500 INCH OD	V
7	PAOZZ	81349	M5086/1-14-9	WIRE, ELECTRICAL	V

END OF FIGURE



**Section III. SPECIAL TOOLS LIST**

(Not Applicable)



TM5-4120-374-23P  
SECTION IV  
CROSS-REFERENCE INDEXES

NATIONAL STOCK NUMBER INDEX

STOCK NUMBER	FIG	ITEM	STOCK NUMBER	FIG	ITEM
5305-00-054-6651	4	5	5975-00-803-2536	1	21
5305-00-054-6652	5	2	4730-00-821-9184	7	32
5305-00-054-6653	2	9	5355-00-842-3111	5	1
5305-00-054-6668	2	29	5340-00-923-8544	2	32
	2	34	5310-00-925-9646	6	7
	4	1	5310-00-926-1832	2	25
	7	4	5305-00-939-0795	6	5
5305-00-054-6669	2	17	5310-00-939-0850	2	30
	7	12		4	2
5305-00-054-6670	1	10		7	5
	2	24	5320-00-957-2499	1	17
5305-00-054-6671	3	2	5305-00-958-5474	5	4
5305-00-054-6672	1	5	5325-00-960-2410	2	37
5310-00-059-9264	7	17	5310-00-982-4988	4	4
5305-00-068-0512	4	9	5305-00-984-7341	7	25
5310-00-080-6004	7	18	5305-00-984-7351	2	12
4130-00-081-5399	7	8	5305-00-984-7363	2	2
5360-00-105-9432	2	7	5935-01-005-3579	6	2
5945-00-107-7146	6	21	4820-01-015-6690	7	29
5940-00-113-8179	6	10	5640-01-031-1262	BULK	3
	6	11	4140-01-066-9502	4	11
5940-00-143-4774	6	9	4130-01-071-5466	3	5
	6	12	6105-01-072-5722	4	10
5940-00-143-4775	6	6	4130-01-080-1590	7	14
	6	16	4730-01-092-3835	7	28
	6	19	4130-01-117-9606	7	2
4730-00-189-2737	7	3	5330-01-123-3531	3	4
8305-00-196-8816	BULK	2	4140-01-148-8984	4	7
4710-00-203-3171	BULK	4	4130-01-149-2357	2	31
5310-00-225-5328	2	23	4130-01-174-4064	7	15
5310-00-241-6640	7	23	5910-01-178-4196	5	7
5305-00-253-5606	1	1	5360-01-179-5981	2	5
4730-00-257-2163	7	33	4120-01-188-8199	1	15
5305-00-269-2809	7	16	4130-01-195-9725	1	13
4010-00-272-8812	2	8	5340-01-197-9546	1	12
4710-00-277-5527	BULK	5	9905-01-214-4797	1	18
4730-00-289-0365	7	11			
5930-00-338-8987	5	5			
4710-00-424-2694	BULK	6			
5940-00-432-2660	6	4			
	6	15			
	6	18			
4820-00-472-2641	7	10			
5340-00-543-4394	7	13			
6145-00-548-1268	BULK	1			
6145-00-578-7516	BULK	7			
5340-00-598-0597	2	28			
	4	3			
5930-00-617-3585	5	6			
5340-00-726-9819	4	8			
6685-00-758-5244	7	20			

PART NUMBER INDEX

FSCM	PART NUMBER	STOCK NUMBER	FIG	ITEM
81346	ASTM-B280.375 OD /24IN		7	31
81346	ASTM-B280.500 OD /14IN		7	30
81346	ASTM-B280		2	13
81346	ASTM-B280-80	4710-00-277-5527	BULK	5
81346	ASTM-B280.375 OD /15IN		7	34
81346	ASTM-B280.375 OD /16IN		7	19
81346	ASTM-B280	4710-00-424-2694	BULK	6
41947	A15966	6685-00-758-5244	7	20
81346	CO-03HGF(3/14)05 65	6145-00-548-1268	BULK	1
06845	C681660-1	4010-00-272-8812	2	8
70436	FT191	5340-00-923-8544	2	32
81349	MIL-G-20241		1	22
			2	19
81349	MIL-I-14511	5640-01-031-1262	BULK	3
81349	MIL-P-15024		1	20
81349	MILG20241	8305-00-196-8816	BULK	2
96906	MS15795-841	5310-00-225-5328	2	23
96906	MS16228-6C	5310-00-241-6640	7	23
96906	MS20604B4W2	5320-00-957-2499	1	17
96906	MS21045C4	5310-00-982-4988	4	4
96906	MS21045C6	5310-00-059-9264	7	17
96906	MS21083C06	5310-00-925-9646	6	7
96906	MS21083C08	5310-00-939-0850	2	30
			4	2
			7	5
96906	MS21083C3	5310-00-926-1835	2	25
96906	MS21266-1N	5325-00-960-2410	2	37
96906	MS21318-7	5305-00-253-5606	1	1
96906	MS21919-DG8	5340-00-598-0597	2	28
96906	MS21919DG3	5340-00-726-9819	4	8
96906	MS21919DG4		2	26
			7	6
96906	MS21919DG6	5340-00-543-4394	7	13
96906	MS21919DG8	5340-00-598-0597	4	3
96906	MS24586C48	5360-00-105-9432	2	7
96906	MS25036-107	5940-00-113-8179	6	10
			6	11
96906	MS25036-153	5940-00-143-4774	6	9
			6	12
96906	MS25036-156	5940-00-143-4775	6	6
			6	16
			6	19
96906	MS27183-14	5310-00-080-6004	7	18
96906	MS35190-250	5305-00-958-5474	5	4
96906	MS35191-272	5305-00-984-7363	2	2
96906	MS35191-273	5305-00-984-7341	7	25

TM5-4120-374-23P  
SECTION IV  
CROSS-REFERENCE INDEXES

PART NUMBER INDEX

FSCM	PART NUMBER	STOCK NUMBER	FIG	ITEM
96906	MS35191-275	5305-00-984-7351	2	12
96906	MS35218-26	5305-00-939-0795	6	5
96906	MS35872-2	4730-00-189-2737	7	3
96906	MS35929-2	4730-00-257-2163	7	33
96906	MS51957-27	5305-00-054-6651	4	5
96906	MS51957-28	5305-00-054-6652	5	2
96906	MS51957-29	5305-00-054-6653	2	9
96906	MS51957-43	5305-00-054-6668	2	29
			2	34
			4	1
			7	4
96906	MS51957-44	5305-00-054-6669	2	17
			7	12
96906	MS51957-45	5305-00-054-6670	1	10
			2	24
96906	MS51957-46	5305-00-054-6671	3	2
96906	MS51957-47	5305-00-054-6672	1	5
96906	MS90726-66	5305-00-269-2809	7	16
96906	MS90727-4	5305-00-068-0512	4	9
96906	MS91528-1A2B	5355-00-842-3111	5	1
81349	M5086/1-14-9	6145-00-578-7516	BULK	7
81343	SAEJ513	4730-00-289-0365	7	11
28520	SR8P2	5975-00-803-2536	1	21
81348	WC596-13-3	5935-01-005-3579	6	2
56289	014-0008-71		6	20
14569	040-0088-04	5945-00-107-7146	6	21
97403	13211E4043-12	4730-00-821-9184	7	32
97403	13214E3557	4130-00-081-5399	7	8
97403	13215E1719		6	13
97403	13216E6108-7		2	6
97403	13216E6191-3	5940-00-432-2660	6	4
			6	15
			6	18
97403	13219E9499-1	4820-01-015-6690	7	29
97403	13219E9540	4730-01-092-3835	7	28
97403	13221E4530	5340-01-197-9546	1	12
97403	13221E4531	4130-01-195-9725	1	13
97403	13221E4532		1	14
97403	13221E4533	4130-01-071-5466	3	5
97403	13221E4534	4130-01-117-9606	7	2
97403	13221E4535	4130-01-080-1590	7	14
97403	13221E4536		3	3
97403	13221E4537	5330-01-123-3531	3	4
97403	13221E4538		7	22
97403	13221E4539		4	12
97403	13221E4541		2	1
97403	13221E4542		2	11
97403	13221E4543		7	1
97403	13221E4544		2	18
97403	13221E4545		2	4
97403	13221E4547		4	6

TM5-4120-374-23P  
SECTION IV  
CROSS-REFERENCE INDEXES

PART NUMBER INDEX

FSCM	PART NUMBER	STOCK NUMBER	FIG	ITEM
97403	13221E4550		2	3
97403	13221E4552	9905-01-214-4797	1	18
97403	13221E4554	5930-00-617-3585	5	6
97103	13221E4555		2	35
97403	13221E4556		2	36
97403	13221E4557		2	40
97403	13221E4558		2	39
97403	13221E4559		2	38
97403	13221E4562		1	16
97403	13221E4563		1	11
97403	13221E4564		2	10
97403	13221E4566		2	22
97403	13221E4567		5	3
97403	13221E4568		1	9
97403	13221E4569	4120-01-188-8199	1	15
97403	13221E4570	4130-01-149-2357	2	31
97403	13221E4574	4820-00-472-2641	7	10
97403	13221E4575	4140-01-066-9502	4	11
97403	13221E4576		1	8
97403	13221E4577		1	7
97403	13221E4578		1	6
97403	13221E4580		2	33
97403	13221E4580-14		1	23
97403	13221E4580-19		6	1
97403	13221E4580-25		2	14
97403	13221E4580-65		2	21
97403	13221E4580-82		3	1
97403	13221E4580-89		2	20
97403	13221E4580-90		2	16
97403	13221E4583	6105-01-072-5722	4	10
97403	13221E4584		1	19
97403	13221E4585-6		6	8
97403	13221E4585-7		6	3
97403	13221E4585-8		6	17
97403	13221E4585-9		6	14
97403	13221E5746		2	15
97403	13225E8600	4130-01-174-4064	7	15
97403	13225E8602		2	27
97403	13225E8603-1		1	4
97403	13225E8603-2		1	3
97403	13225E8603-3		1	2
97403	13225E8604	5360-01-179-5981	2	5
97403	13225E8605	4140-01-148-8984	4	7
76854	240T6HPC	5930-00-338-8987	5	5
81755	414474072	4710-00-203-3171	BULK	4
81755	414474072/10IN		7	24
81755	414474072/12IN		7	21
			7	27
81755	414474072/15IN		7	26
81755	414474072/18IN		7	35
81755	414474072/24IN		7	7



TM5-4120-374-23P  
SECTION IV  
CROSS-REFERENCE INDEXES

PART NUMBER INDEX

FSCM	PART NUMBER	STOCK NUMBER	FIG	ITEM
81755	414474072/30IN		7	9
01002	97F3136	5910-01-178-4196	5	7

FIGURE AND ITEM NUMBER INDEX

FIG	ITEM	STOCK NUMBER	FSCM	PART NUMBER
BULK	1	6145-00-548-1268	81349	CO-03HGF(3/14)05 65
BULK	2	8305-00-196-8816	81349	MIL20241
BULK	3	5640-01-031-1262	81349	MIL-I-14511
BULK	4	4710-00-203-3171	81755	414474072
BULK	5	4710-00-277-5527	81346	ASTM-B280-80
BULK	6	4710-00-424-2694	81346	ASTM-B280
BULK	7	6145-00-578-7516	81349	M5086/1-14-9
1	1	5305-00-253-5606	96906	MS21318-7
1	2		97403	13225E8603-3
1	3		97403	13225E8603-2
1	4		97403	13225E8603-1
1	5	5305-00-054-6672	96906	MS51957-47
1	6		97403	13221E4578
1	7		97403	13221E4577
1	8		97403	13221E4576
1	9		97403	13221E4568
1	10	5305-00-054-6670	96906	MS51957-45
1	11		97403	13221E4563
1	12	5340-01-197-9546	97403	13221E4530
1	13	4130-01-195-9725	97403	13221E4531
1	14		97403	13221E4532
1	15	4120-01-188-8199	97403	13221E4569
1	16		97403	13221E4562
1	17	5320-00-957-2499	96906	MS20604B4W2
1	18	9905-01-214-4797	97403	13221E4552
1	19		97403	13221E4584
1	20		81349	MIL-P-15024
1	21	5975-00-803-2536	28520	SR8P2
1	22		81349	MIL-G-20241
1	23		97403	13221E4580-14
2	1		97403	13221E4541
2	2	5305-00-984-7363	96906	MS35191-272
2	3		97403	13221E4550
2	4		97403	13221E4545
2	5	5360-01-179-5981	97403	13225E8604
2	6		97403	13216E6108-7
2	7	5360-00-105-9432	96906	MS24586C48
2	8	4010-00-272-8812	06845	C681660-1
2	9	5305-00-054-6653	96906	MS51957-29
2	10		97403	13221E4564
2	11		97403	13221E4542
2	12	5305-00-984-7351	96906	MS35191-275
2	13		81346	ASTM-B280
2	14		97403	13221E4580-25
2	15		97403	13221E5746
2	16		97403	13221E4580-90
2	17	5305-00-054-6669	96906	MS51957-44
2	18		97403	13221E4544
2	19		81349	MIL-G-20241
2	20		97403	13221E4580-89

TM5-4120-374-23P  
SECTION IV  
CROSS-REFERENCE INDEXES

FIGURE AND ITEM NUMBER INDEX

FIG	ITEM	STOCK NUMBER	FSCM	PART NUMBER
2	21		97403	13221E4580-65
2	22		97403	13221E4566
2	23	5310-00-225-5328	96906	MS15795-841
2	24	5305-00-054-6670	96906	MS51957-45
2	25	5310-00-926-1835	96906	MS21083C3
2	26		96906	MS21919DG4
2	27		97403	13225E8602
2	28	5340-00-598-0597	96906	MS21919-DG8
2	29	5305-00-054-6668	96906	MS51957-43
2	30	5310-00-939-0850	96906	MS21083C08
2	31	4130-01-149-2357	97403	13221E4570
2	32	5340-00-923-8544	70436	FT191
2	33		97403	13221E4580
2	34	5305-00-054-6668	96906	MS51957-43
2	35		97103	13221E4555
2	36		97403	13221E4556
2	37	5325-00-960-2410	96906	MS21266-1N
2	38		97403	13221E4559
2	39		97403	13221E4558
2	40		97403	13221E4557
3	1		97403	13221E4580-82
3	2	5305-00-054-6671	96906	MS51957-46
3	3		97403	13221E4536
3	4	5330-01-123-3531	97403	13221E4537
3	5	4130-01-071-5466	97403	13221E4533
4	1	5305-00-054-6668	96906	MS51957-43
4	2	5310-00-939-0850	96906	MS21083C08
4	3	5340-00-598-0597	96906	MS21919DG8
4	4	5310-00-982-4988	96906	MS21045C4
4	5	5305-00-054-6651	96906	MS51957-27
4	6		97403	13221E4547
4	7	4140-01-148-8984	97403	13225E8605
4	8	5340-00-726-9819	96906	MS21919DG3
4	9	5305-00-068-0512	96906	MS90727-4
4	10	6105-01-072-5722	97403	13221E4583
4	11	4140-01-066-9502	97403	13221E4575
4	12		97403	13221E4539
5	1	5355-00-842-3111	96906	MS91528-1A2B
5	2	5305-00-054-6652	96906	MS51957-28
5	3		97403	13221E4567
5	4	5305-00-958-5474	96906	MS35190-250
5	5	5930-00-338-8987	76854	240T6HPC
5	6	5930-00-617-3585	97403	13221E4554
5	7	5910-01-178-4196	01002	97F3136
6	1		97403	13221E4580-19
6	2	5935-01-005-3579	81349	WC596-13-3
6	3		97403	13221E4585-7
6	4	5940-00-432-2660	97403	13216E6191-3
6	5	5305-00-939-0795	96906	MS35218-26
6	6	5940-00-143-4775	96906	MS25036-156
6	7	5310-00-925-9646	96906	MS21083C06

TM5-4120-374-23P  
SECTION IV  
CROSS-REFERENCE INDEXES

FIGURE AND ITEM NUMBER INDEX

FIG	ITEM	STOCK NUMBER	FSCM	PART NUMBER
6	8		97403	13221E4585-6
6	9	5940-00-143-4774	96906	MS25036-153
6	10	5940-00-113-8179	96906	MS25036-107
6	11	5940-00-113-8179	96906	MS25036-107
6	12	5940-00-143-4774	96906	MS25036-153
6	13		97403	13215E1719
6	14		97403	13221E4585-9
6	15	5940-00-432-2660	97403	13216E6191-3
6	16	5940-00-143-4775	96906	MS25036-156
6	17		97403	13221E4585-8
6	18	5940-00-432-2660	97403	13216E6191-3
6	19	5940-00-143-4775	96906	MS25036-156
6	20		56289	014-0008-71
6	21	5945-00-107-7146	14569	040-0088-04
7	1		97403	13221E4543
7	2	4130-01-117-9606	97403	13221E4534
7	3	4730-00-189-2737	96906	MS35872-2
7	4	5305-00-054-6668	96906	MS51957-43
7	5	5310-00-939-0850	96906	MS21083C08
7	6		96906	MS21919DG4
7	7		81755	414474072/24IN
7	8	4130-00-081-5399	97403	13214E3557
7	9		81755	414474072/30IN
7	10	4820-00-472-2641	97403	13221E4574
7	11	4730-00-289-0365	81343	SAEJ513
7	12	5305-00-054-6669	96906	MS51957-44
7	13	5340-00-543-4394	96906	MS21919DG6
7	14	4130-01-080-1590	97403	13221E4535
7	15	4130-01-174-4064	97403	13225E8600
7	16	5305-00-269-2809	96906	MS90726-66
7	17	5310-00-059-9264	96906	MS21045C6
7	18	5310-00-080-6004	96906	MS27183-14
7	19		81346	ASTM-B280.375 OD /16IN
7	20	6685-00-758-5244	41947	A15966
7	21		81755	414474072/12IN
7	22		97403	13221E4538
7	23	5310-00-241-6640	96906	MS16228-6C
7	24		81755	414474072/10IN
7	25	5305-00-984-7341	96906	MS35191-273
7	26		81755	414474072/15IN
7	27		81755	414474072/12IN
7	28	4730-01-092-3835	97403	13219E9540
7	29	4820-01-015-6690	97403	13219E9499-1
7	30		81346	ASTM-B280.500 OD /14IN
7	31		81346	ASTM-B280.375 OD /24IN
7	32	4730-00-821-9184	97403	13211E4043-12
7	33	4730-00-257-2163	96906	MS35929-2
7	34		81346	ASTM-B280.375 OD /15IN

TM5-4120-374-23P  
SECTION IV  
CROSS-REFERENCE INDEXES

FIGURE AND ITEM NUMBER INDEX

FIG	ITEM	STOCK NUMBER	FSCM	PART NUMBER
7	35		81755	414474072/18IN



**By Order of the Secretary of the Army**

**CARL E. VUONO**  
*General, United States Army*  
*Chief of Staff*

**Official:**

**WILLIAM J. MEEHAN, II**  
*Brigadier General, United States Army*  
*The Adjutant General*

**DISTRIBUTION:**

To be distributed in accordance with DA Form 12-25E, Unit and Direct Support Maintenance requirements for Air Conditioner, Horizontal, 9,000 BTU/HR (FM9000).







THEN... JOT DOWN THE DOPE ABOUT IT ON THIS FORM, CAREFULLY TEAR IT OUT, FOLD IT AND DROP IT IN THE MAIL!

SOMETHING WRONG WITH THIS PUBLICATION?

FROM: (PRINT YOUR UNIT'S COMPLETE ADDRESS)  
**PFC JOHN DOE**  
**COA, 3d ENGINEER BN**  
**FT. LEONARDWOOD, MO 63108**  
 DATE SENT

PUBLICATION NUMBER <b>TM 5-4120-374-23P</b>	PUBLICATION DATE <b>16 Sep 90</b>	PUBLICATION TITLE <b>Air Conditioner, Horizontal</b>
--	--------------------------------------	---

BE EXACT... PIN-POINT WHERE IT IS				IN THIS SPACE TELL WHAT IS WRONG AND WHAT SHOULD BE DONE ABOUT IT:
PAGE NO.	PARA-GRAPH	FIGURE NO.	TABLE NO.	
<b>6</b>	<b>2-1 a</b>			<i>In line 6 of paragraph 2-1a the manual states the engine has <u>6</u> cylinders. The engine on my set only has <u>4</u> cylinders. Change the manual to show <u>4</u> cylinders.</i>
<b>B1</b>		<b>4-3</b>		<i>Callout 16 on figure 4-3 is pointing at a <u>bolt</u>. In key to figure 4-3, item 16 is called a <u>shim</u> - Please correct one or the other.</i>
<b>125</b>	<b>line 20</b>			<i>I ordered a gasket, item 19 on figure B-16 by NSN 2 910-05-762-3001. I got a gasket but it doesn't fit. Supply says I got what I ordered, so the NSN is wrong. Please give me a good NSN</i>

PRINTED NAME, GRADE OR TITLE, AND TELEPHONE NUMBER <b>JOHN DOE, PFC (268) 317-7111</b>	SIGN HERE: <b>JOHN DOE</b>
---	----------------------------

FILL IN YOUR  
UNIT'S ADDRESS

FOLD BACK

DEPARTMENT OF THE ARMY

OFFICIAL BUSINESS

COMMANDER  
U S ARMY TROOP SUPPORT COMMAND  
ATTN: AMSTR-MCTS  
4300 GOODFELLOW BOULEVARD  
ST. LOUIS, MO 63120-1798

TEAR ALONG PERFORATED LINE

RECOMMENDED CHANGES TO EQUIPMENT TECHNICAL PUBLICATIONS



THEN... JOT DOWN THE DOPE ABOUT IT ON THIS FORM. CAREFULLY TEAR IT OUT. FOLD IT AND DROP IT IN THE MAIL!

**SOMETHING WRONG WITH THIS PUBLICATION?**

FROM: (PRINT YOUR UNIT'S COMPLETE ADDRESS)

DATE SENT

PUBLICATION NUMBER

TM 5-4120-374-23P

PUBLICATION DATE

16 Sep 90

PUBLICATION TITLE

Air Conditioner, Horizontal

BE EXACT... PIN-POINT WHERE IT IS

PAGE NO

PARA-GRAPH

FIGURE NO

TABLE NO

IN THIS SPACE TELL WHAT IS WRONG AND WHAT SHOULD BE DONE ABOUT IT:

TEAR ALONG PERFORATED LINE

PRINTED NAME, GRADE OR TITLE, AND TELEPHONE NUMBER

SIGN HERE:

DA FORM 2028-2  
1 JUL 79

PREVIOUS EDITIONS ARE OBSOLETE.  
DRSTS-M Overprint 2, 1 Nov 80.

P.S.--IF YOUR OUTFIT WANTS TO KNOW ABOUT YOUR RECOMMENDATION MAKE A CARBON COPY OF THIS AND GIVE IT TO YOUR HEADQUARTERS.

FILL IN YOUR  
UNIT'S ADDRESS

FOLD BACK

DEPARTMENT OF THE ARMY

OFFICIAL BUSINESS

COMMANDER  
U S ARMY TROOP SUPPORT COMMAND  
ATTN: AMSTR-MCTS  
4300 GOODFELLOW BOULEVARD  
ST. LOUIS, MO 63120-1798

TEAR ALONG PERFORATED LINE

RECOMMENDED CHANGES TO EQUIPMENT TECHNICAL PUBLICATIONS

**SOMETHING WRONG WITH THIS PUBLICATION?**



THEN... JOT DOWN THE DOPE ABOUT IT ON THIS FORM. CAREFULLY TEAR IT OUT. FOLD IT AND DROP IT IN THE MAIL!

FROM: (PRINT YOUR UNIT'S COMPLETE ADDRESS)

DATE SENT

PUBLICATION NUMBER

TM 5-4120-374-23P

PUBLICATION DATE

16 Sep 90

PUBLICATION TITLE

Air Conditioner, Horizontal

BE EXACT... PIN-POINT WHERE IT IS

PAGE NO	PARA-GRAPH	FIGURE NO	TABLE NO
---------	------------	-----------	----------

IN THIS SPACE TELL WHAT IS WRONG AND WHAT SHOULD BE DONE ABOUT IT:

PRINTED NAME, GRADE OR TITLE, AND TELEPHONE NUMBER

SIGN HERE

DA FORM 1 JUL 79 2028-2

PREVIOUS EDITIONS ARE OBSOLETE.  
DRSTS-M Overprint 2, 1 Nov 80.

P.S.--IF YOUR OUTFIT WANTS TO KNOW ABOUT YOUR RECOMMENDATION MAKE A CARBON COPY OF THIS AND GIVE IT TO YOUR HEADQUARTERS.

TEAR ALONG PERFORATED LINE

FILL IN YOUR  
UNIT'S ADDRESS

FOLD BACK

DEPARTMENT OF THE ARMY

OFFICIAL BUSINESS

COMMANDER  
U S ARMY TROOP SUPPORT COMMAND  
ATTN: AMSTR-MCTS  
4300 GOODFELLOW BOULEVARD  
ST. LOUIS, MO 63120-1798

TEAR ALONG PERFORATED LINE

RECOMMENDED CHANGES TO EQUIPMENT TECHNICAL PUBLICATIONS

**SOMETHING WRONG** WITH THIS PUBLICATION?



THEN... JOT DOWN THE DOPE ABOUT IT ON THIS FORM. CAREFULLY TEAR IT OUT. FOLD IT AND DROP IT IN THE MAIL!

FROM: (PRINT YOUR UNIT'S COMPLETE ADDRESS)

DATE SENT

PUBLICATION NUMBER

TM 5-4120-374-23P

PUBLICATION DATE

16 Sep 90

PUBLICATION TITLE

Air Conditioner, Horizontal

BE EXACT PIN-POINT WHERE IT IS

PAGE NO

PARA-GRAPH

FIGURE NO

TABLE NO

IN THIS SPACE TELL WHAT IS WRONG AND WHAT SHOULD BE DONE ABOUT IT:

PRINTED NAME, GRADE OR TITLE, AND TELEPHONE NUMBER

SIGN HERE

DA FORM 2028-2  
1 JUL 79

PREVIOUS EDITIONS ARE OBSOLETE.  
DRSTS-M Overprint 2, 1 Nov 80.

P.S.--IF YOUR OUTFIT WANTS TO KNOW ABOUT YOUR RECOMMENDATION MAKE A CARBON COPY OF THIS AND GIVE IT TO YOUR HEADQUARTERS.

FILL IN YOUR  
UNIT'S ADDRESS

FOLD BACK

DEPARTMENT OF THE ARMY

OFFICIAL BUSINESS

COMMANDER  
U S ARMY TROOP SUPPORT COMMAND  
ATTN: AMSTR-MCTS  
4300 GOODFELLOW BOULEVARD  
ST. LOUIS, MO 63120-1798



# The Metric System and Equivalents

## Linear Measure

1 centimeter = 10 millimeters = .39 inch  
 1 decimeter = 10 centimeters = 3.94 inches  
 1 meter = 10 decimeters = 39.37 inches  
 1 dekameter = 10 meters = 32.8 feet  
 1 hectometer = 10 dekameters = 328.08 feet  
 1 kilometer = 10 hectometers = 3,280.8 feet

## Weights

1 centigram = 10 milligrams = .15 grain  
 1 decigram = 10 centigrams = 1.54 grains  
 1 gram = 10 decigrams = .035 ounce  
 1 dekagram = 10 grams = .35 ounce  
 1 hectogram = 10 dekagrams = 3.52 ounces  
 1 kilogram = 10 hectograms = 2.2 pounds  
 1 quintal = 100 kilograms = 220.46 pounds  
 1 metric ton = 10 quintals = 1.1 short tons

## Liquid Measure

1 centiliter = 10 milliliters = .34 fl. ounce  
 1 deciliter = 10 centiliters = 3.38 fl. ounces  
 1 liter = 10 deciliters = 33.81 fl. ounces  
 1 dekaliter = 10 liters = 2.64 gallons  
 1 hectoliter = 10 dekaliters = 26.42 gallons  
 1 kiloliter = 10 hectoliters = 264.18 gallons

## Square Measure

1 sq. centimeter = 100 sq. millimeters = .155 sq. inch  
 1 sq. decimeter = 100 sq. centimeters = 15.5 sq. inches  
 1 sq. meter (centare) = 100 sq. decimeters = 10.76 sq. feet  
 1 sq. dekameter (are) = 100 sq. meters = 1,076.4 sq. feet  
 1 sq. hectometer (hectare) = 100 sq. dekameters = 2.47 acres  
 1 sq. kilometer = 100 sq. hectometers = .386 sq. mile

## Cubic Measure

1 cu. centimeter = 1000 cu. millimeters = .06 cu. inch  
 1 cu. decimeter = 1000 cu. centimeters = 61.02 cu. inches  
 1 cu. meter = 1000 cu. decimeters = 35.31 cu. feet

## Approximate Conversion Factors

To change	To	Multiply by	To change	To	Multiply by
inches	centimeters	2.540	ounce-inches	newton-meters	.007062
feet	meters	.305	centimeters	inches	.394
yards	meters	.914	meters	feet	3.280
miles	kilometers	1.609	meters	yards	1.094
square inches	square centimeters	6.451	kilometers	miles	.621
square feet	square meters	.093	square centimeters	square inches	.155
square yards	square meters	.836	square meters	square feet	10.764
square miles	square kilometers	2.590	square meters	square yards	1.196
acres	square hectometers	.405	square kilometers	square miles	.386
cubic feet	cubic meters	.028	square hectometers	acres	2.471
cubic yards	cubic meters	.765	cubic meters	cubic feet	35.315
fluid ounces	milliliters	29.573	cubic meters	cubic yards	1.308
pints	liters	.473	milliliters	fluid ounces	.034
quarts	liters	.946	liters	pints	2.113
gallons	liters	3.785	liters	quarts	1.057
ounces	grams	28.349	grams	gallons	.264
pounds	kilograms	.454	grams	ounces	.035
short tons	metric tons	.907	kilograms	pounds	2.205
pound-feet	newton-meters	1.356	metric tons	short tons	1.102
pound-inches	newton-meters	.11296			

## Temperature (Exact)

°F	Fahrenheit temperature	5/9 (after subtracting 32)	Celsius temperature	°C
----	------------------------	----------------------------	---------------------	----

